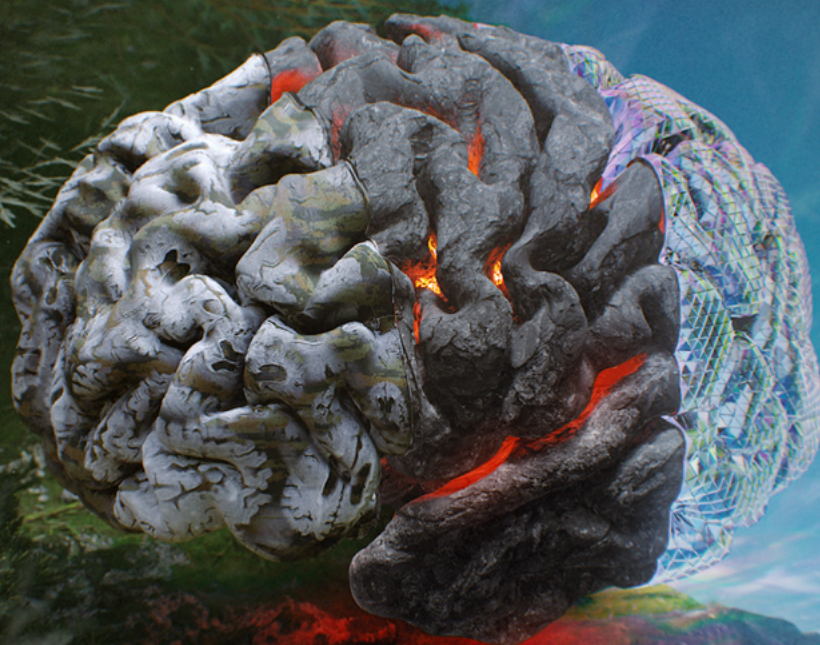


CHALLENGING THE CONCEPT

EAN JUNE 19-22 2021



DISEASE PROGRESSION(S) IN MS.

SANOFI GENZYME 

Sanofi Genzyme invites you to join us on our 3-day virtual satellite sessions at the 7th annual EAN congress, where we will be shining a spotlight on disease progression in MS.



 DAY 1: SATURDAY, JUNE 19, 13:15-13:45 CET

THE HIDDEN DRIVERS OF DISEASE PROGRESSION: PEERING BEHIND THE BLOOD BRAIN BARRIER



PROF. NIKOLAOS GRIGORIADIS, GREECE

Look closely at the various mechanisms underlying MS disease progression including parameters such as age, brain atrophy, microglial activation, and other processes within the CNS.



 DAY 2: SUNDAY, JUNE 20, 13:15-13:45 CET

UNMASKING SPMS: CHALLENGING THE DOGMA



PROF. DANA HORAKOVA, CZECH REPUBLIC

Examine the transition to secondary progressive MS (SPMS), current challenges in delaying the transition, and the need for new approaches for improved patient care.



 DAY 3: MONDAY, JUNE 21, 13:15-13:45 CET

FACING THE CHALLENGE: MANAGING DISEASE PROGRESSIONS



PROF. BART VAN WIJMEERSCH, BELGIUM

Take a look at enhanced monitoring tools such as advanced imaging, optical coherence tomography, evoked potentials, and biomarkers; all of which allow monitoring disease progression more closely, thereby enabling personalised treatment strategies and better patient care.

The satellite sessions will be available on the [EAN website](#) during the congress, and will be available on-demand after the event.

**We look forward to welcoming you to our 2021 EAN symposia.
We hope you can join us!**